

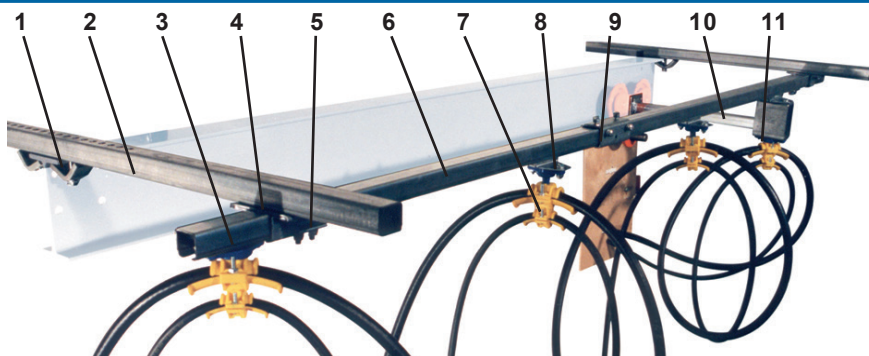
CABLE TROLLEYS IN PLASTIC

for C-rail 30x32 mm

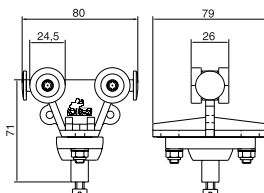
Roundcable



Sheet 11-20 2016



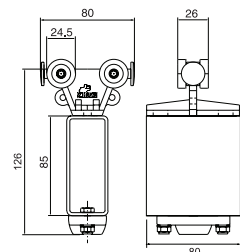
1. Girder clips
2. Support arm
3. End clamp
4. Support bracket
5. End stop
6. C-rail
7. Cable clamp
8. Cable trolley
9. Track coupler
10. Towing arm
11. Towing trolley



Cable trolley

Material: Polyamide body and ball joint
Steel axles

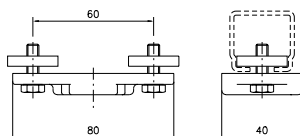
Wheel:	Polyamide	Galvanized steel
Cable load, kg:	6	15
Weight, kg:	0,10	0,16
Article No.:	11 305	11 306



Towing trolley

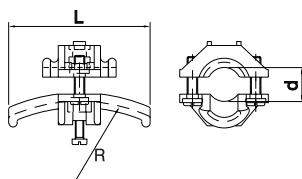
Material: Polyamide body
Steel axles
PVC towing box

Wheel:	Polyamide	Galvanized steel
Cable load, kg:	6	15
Weight, kg:	0,15	0,21
Article No.:	11 760	11 761



Affixing plate for cable clamp

Material: Polyamide, Galvanized steel
Weight, kg: 0,09
Article No.: 11 779

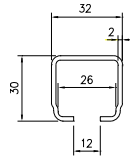


Adjustable clamps for cable or hose

Material: Polyamide

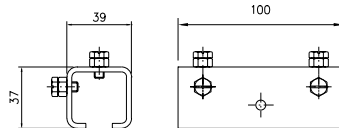
Diam., mm:	10 - 16	17 - 25	26 - 36
Radius, mm:	80	125	160
Length, mm:	70	100	140
Weight, kg:	0,04	0,06	0,12
Article No.:	11 050	11 051	11 052





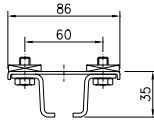
C-rail

Material: Galvanized steel
 Length, mm: 4000 6000
 Weight, kg: 6,2 9,3
 Article No.: 11 900 11 801



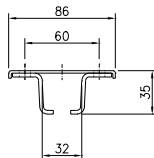
Track coupler

Material: Galvanized steel
 Weight, kg: 0,28
 Best. nr: 11 810



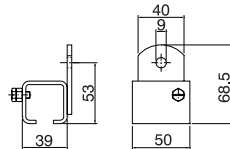
Support bracket with square nuts

Material: Galvanized steel
 Weight, kg: 0,24
 Article No.: 11 820



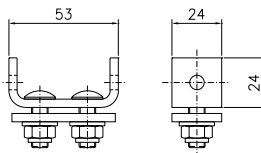
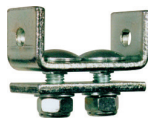
Support bracket for ceiling mounting

Material: Galvanized steel
 Weight, kg: 0,16
 Article No.: 11 825



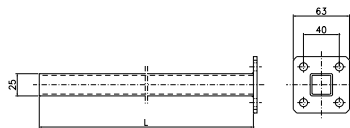
Support bracket for wall mounting

Material: Galvanized steel
 Weight, kg: 0,20
 Article No.: 11 830



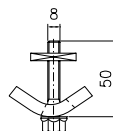
End stop

Material: Galvanized steel
 Weight, kg: 0,13
 Article No.: 11 841



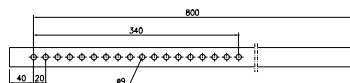
Towing arm

Material: Galvanized steel
 Length, mm: 400 630
 Weight, kg: 0,6 0,8
 Article No.: 11 701 11 702



Girder clips (2 for each support arm)

Material: Galvanized steel
 Weight, kg: 0,15
 Article No.: 11 737



Support arm

Material: Galvanized steel
 Length, mm: 800
 Weight, kg: 1,25
 Article No.: 11 723

