

CABLE TROLLEYS, LONG TROLLEY

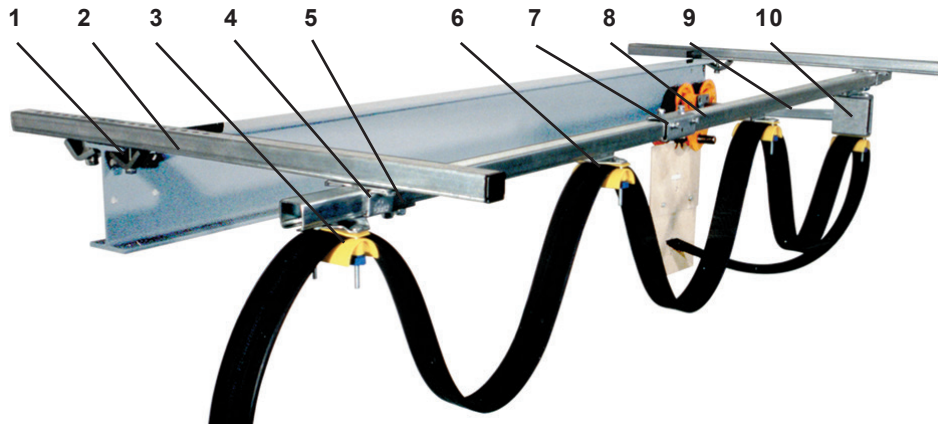
for C-rail 30x32 mm

Flat cable

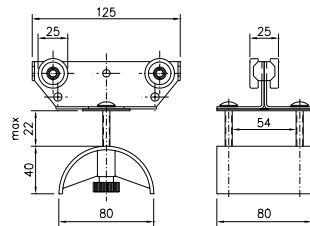
(Clamp with longer bending radius)



Sheet 11-34 2016



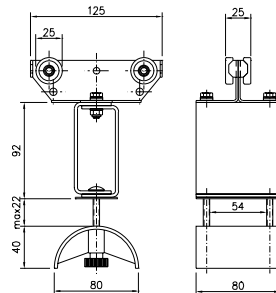
1. Girder clips
2. Support arm
3. End clamp
4. Support bracket
5. End stop
6. Cable trolley
7. Track coupler
8. C-rail
9. Towing arm
10. Towing trolley



Cable trolley flatcable, long version

Material: Galvanized steel body
Wheel with dustproof bearings
Polyamide Cable clamp

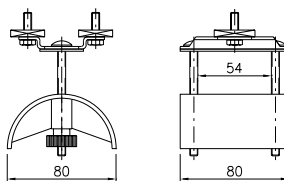
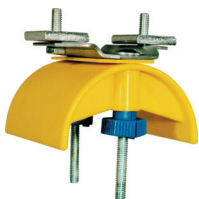
Cable load, kg: 20
Weight, kg: 0,39
Article No.: 11 313



Towing trolley

Material: Galvanized steel body and towing box
Wheel with dustproof bearings
Polyamide Cable clamp

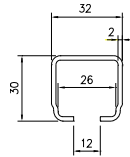
Cable load, kg: 20
Weight, kg: 0,65
Article No.: 11 768



End clamp

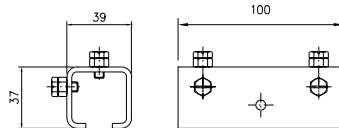
Material: Polyamide, Galvanized steel
Weight, kg: 0,22
Article No.: 11 781





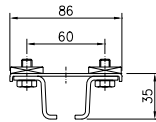
C-rail

Material: Galvanized steel
 Length, mm: 4000 6000
 Weight, kg: 6,2 9,3
 Article No.: 11 900 11 801



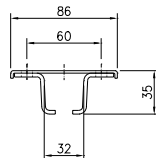
Track coupler

Material: Galvanized steel
 Vi kt, kg: 0,28
 Best. nr: 11 810



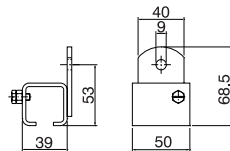
Support bracket with square nuts

Material: Galvanized steel
 Weight, kg: 0,24
 Article No.: 11 820



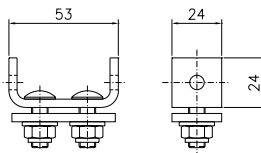
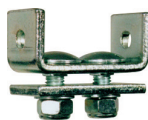
Support bracket for ceiling mounting

Material: Galvanized steel
 Weight, kg: 0,16
 Article No.: 11 825



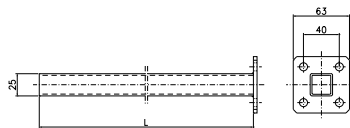
Support bracket for wall mounting

Material: Galvanized steel
 Weight, kg: 0,20
 Article No.: 11 830



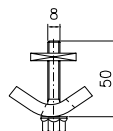
End stop

Material: Galvanized steel
 Weight, kg: 0,13
 Article No.: 11 841



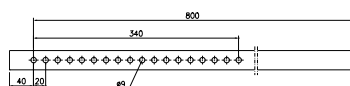
Towing arm

Material: Galvanized steel
 Length, mm: 400 630
 Weight, kg: 0,6 0,8
 Article No.: 11 701 11 702



Girder clips 2 for each support arm

Material: Galvanized steel
 Weight, kg: 0,15
 Article No.: 11 737



Support arm

Material: Galvanized steel
 Length, mm: 800
 Weight, kg: 1,25
 Article No.: 11 723