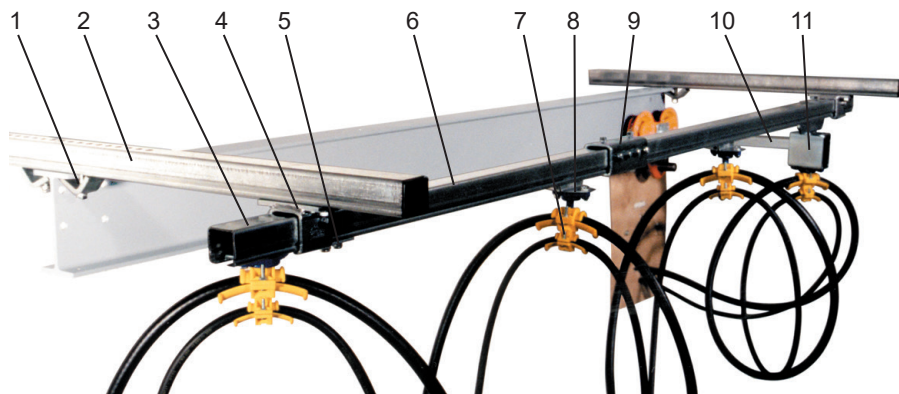


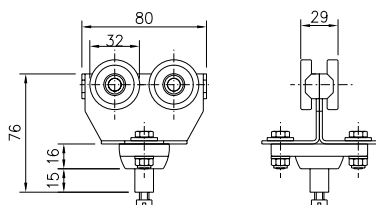
# CABLE TROLLEYS for C-rail 40x40 mm Round cable



Sheet 11-37 2016



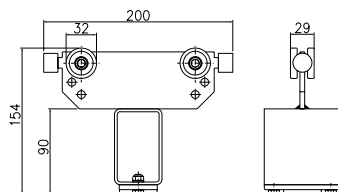
1. Girder clips
2. Support arm
3. End clamp
4. Support bracket
5. End stop
6. C-rail
7. Cable clamp
8. Cable trolley
9. Track coupler
10. Towing arm
11. Towing trolley



## Cable trolley with 4 wheels for round cable

Material: Galvanized steel body  
Wheel with dustproof bearings  
Polyamide ball joint

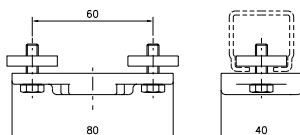
Cable load, kg: 32  
Weight, kg: 0,52  
Article No.: 11 502



## Towing trolley

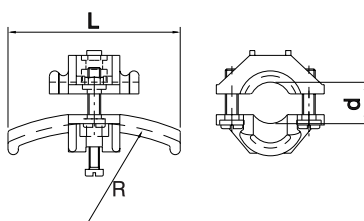
Material: Galvanized steel body and towing box  
Wheel with dustproof bearings  
Polyamide affixing plate

Cable load, kg: 32  
Weight, kg: 1,0  
Article No.: 11 757



## End clamp

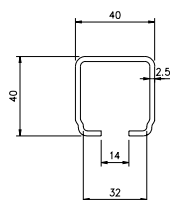
Material: Polyamide, Galvanized steel  
Weight, kg: 0,15  
Article No.: 11 779



## Adjustable clamps for cable or hose

Material: Polyamide

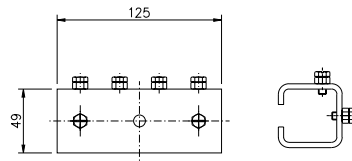
Diam., mm:	10 - 16	17 - 25	26 - 36
Radius, mm:	80	125	160
Length, mm:	70	100	140
Weight, kg:	0,04	0,06	0,12
Article No.:	11 050	11 051	11 052



## C-rail

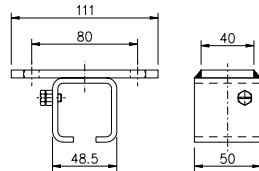
Material: Galvanized steel  
Length, mm: 4000 6000  
Weight, kg: 10,0 15,0  
Article No.: 11 902 11 805





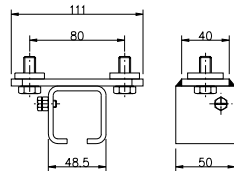
**Track coupler**

Material: Galvanized steel  
Weight, kg: 0,61  
Article No.: 11 812



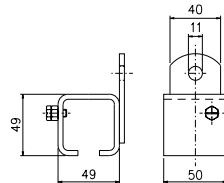
**Support bracket for ceiling mounting**

Material: Galvanized steel  
Weight, kg: 0,36  
Article No.: 11 827



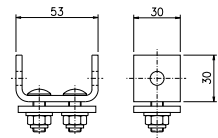
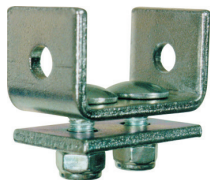
**Support bracket with square nuts**

Material: Galvanized steel  
Weight, kg: 0,45  
Article No.: 11 822



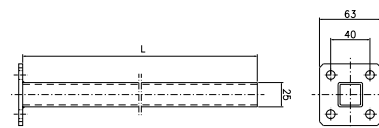
**Support bracket for wall mounting**

Material: Galvanized steel  
Weight, kg: 0,32  
Article No.: 11 832



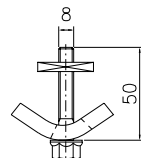
**End stop**

Material: Galvanized steel  
Weight, kg: 0,16  
Article No.: 11 842



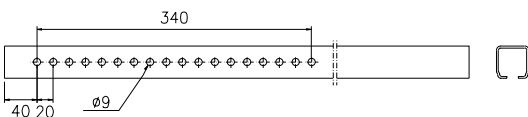
**Towing arm**

Material: Galvanized steel  
Length, mm: 400                      630  
Weight, kg: 0,6                      0,8  
Article No.: 11 701                      11 702



**Girder clips 2 for each support arm**

Material: Galvanized steel  
Weight, kg: 0,15  
Article No.: 11 737



**Support arm**

Material: Galvanized steel  
Length, mm: 800  
Weight, kg: 2,0  
Article No.: 11 727