

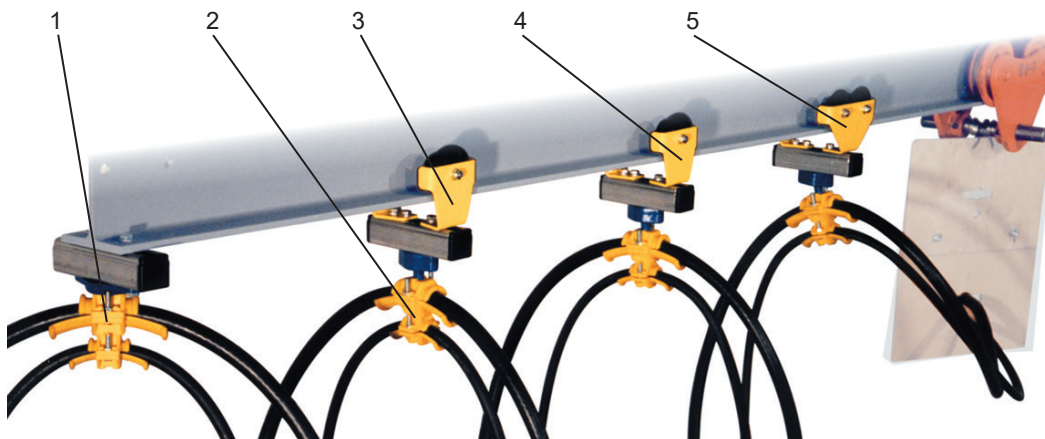
CABLE TROLLEYS

For I-beam

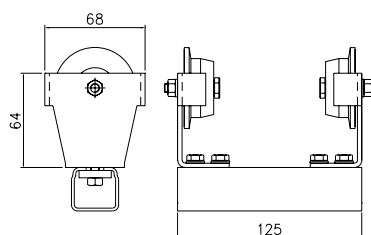
Roundcable



Sheet 11-40 2016



1. End clamp
2. Cable clamp
3. Cable trolley, 2-wheels
4. Cable trolley, 3-wheels
5. Cable trolley, 4-wheels

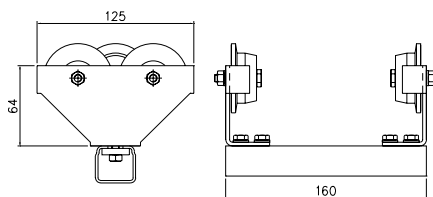


Trolley with 2 wheels

Material: Powder coated body
Polyamidewheels
Stainless steel axle
Galvanized c-rail

Cable load, kg: 10
Weight, kg: 0,50
Article No.: 11 125

Always include the I-beam dimension with your order.

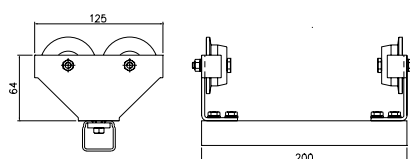


Trolley with 3 wheels

Material: Powder coated body
Polyamidewheels
Stainless steel axle
Galvanized c-rail

Cable load, kg: 10
Weight, kg: 0,60
Article No.: 11 126

Always include the I-beam dimension with your order.



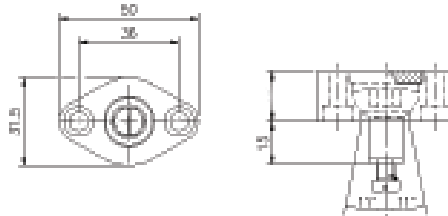
Trolley with 4 wheels

Material: Powder coated body
Polyamidewheels
Stainless steel axle
Galvanized c-rail

Cable load, kg: 20
Weight, kg : 0,70
Article No.: 11 127

Always include the I-beam dimension with your order.

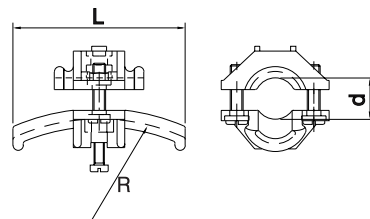




Ball joint

Material: Polyamide

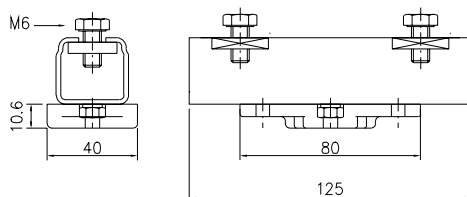
Weight, kg: 0,04
Article No.: 11 299



Adjustable clamp for cable or hose

Material: Polyamide

Diam., mm:	10-16	17-25	26-36
Radius, mm:	80	125	160
Length, mm:	70	100	140
Weight, kg:	0,04	0,06	0,12
Article No.:	11 050	11 051	11 052



End clamp with c-rail

Material: Galvanized c-rail
Polyamide assembly plate

Weight, kg: 0,15
Article No.: 11 732

Adjustable clamp for cable or hose

Article No.: 11 050-11 052 as above.