

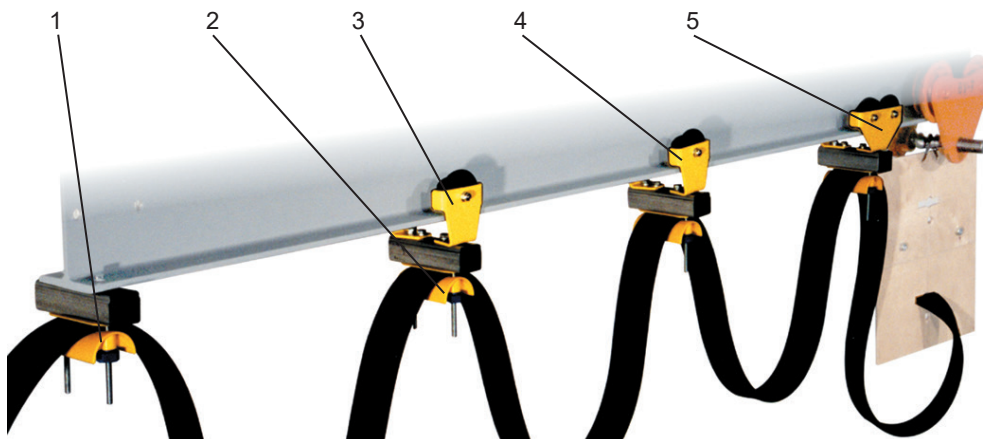
CABLE TROLLEYS

For I-beam

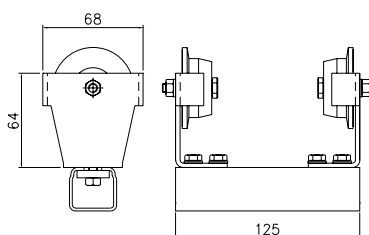
Flat cable



Sheet 11-42 2016



1. End clamp
2. Cable clamp
3. Cable trolley, 2-wheel
4. Cable trolley, 3-wheel
5. Cable trolley, 4-wheel

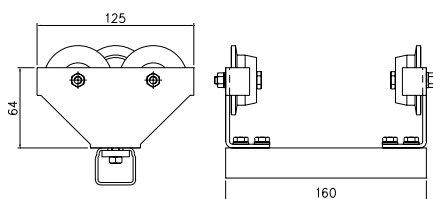


Trolley with 2 wheels

Material: Powder coated body
Polyamidewheels
Stainless steel axle
Galvanized c-rail

Cable load, kg: 10
Weight, kg: 0,50
Article No.: 11 125

Always include the I-beam dimension with your order.

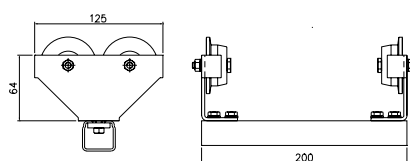


Trolley with 3 wheels

Material: Powder coated body
Polyamidewheels
Stainless steel axle
Galvanized c-rail

Cable load, kg: 10
Weight, kg: 0,60
Article No.: 11 126

Always include the I-beam dimension with your order.



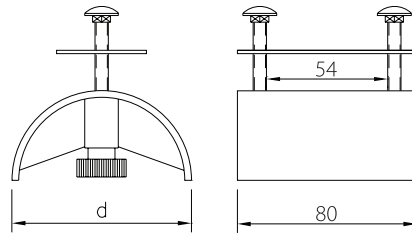
Trolley with 4 wheels

Material: Powder coated body
Polyamidewheels
Stainless steel axle
Galvanized c-rail

Cable load, kg: 20
Weight, kg : 0,70
Article No.: 11 127

Always include the I-beam dimension with your order.



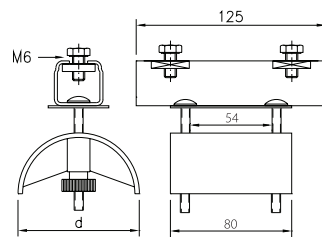


Cable clamps

Material: Polyamide

Article No.:	d	Weight,kg
11 130	50	0,10
11 131	80	0,12

Other sizes available on request.



End clamp with bar

Material: Galvanized C-rail
Polyamide clamp

Article No.:	d	Weight,kg
11 748	50	0,20
11 749	80	0,22

Other sizes available on request.