

WORK STATION EQUIPMENT

Standard trolleys

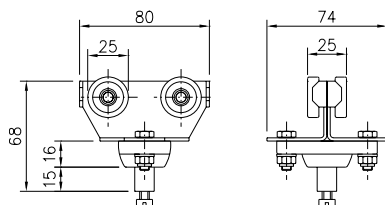
C-rail C30 (30x32 mm.)



Sheet 11-106 2016

CIBES trolleys are available in various models for suspending tools, hose, cable and much more. The trolleys are also used for curtains, sliding doors

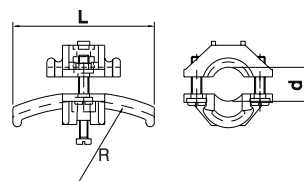
or whatever needed to be movable. The choice of polyamide or steel wheels depends on the workload and frequency of movements.



Cable trolley with 4 wheels for round cable

Material: Galvanized steel body
Wheel with dustproof bearings
Polyamide ball joint

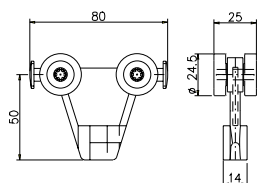
Cable load, kg: 20
Weight, kg: 0,26
Article No.: 11 301



Adjustable clamps for cable or hose

Material: Polyamide

Diam., mm:	10 - 16	17 - 25	26 - 36
Radie, mm:	80	125	160
Length, mm:	70	100	140
Weight, kg:	0,04	0,06	0,12
Article No.:	11 050	11 051	11 052



Polyamide trolley

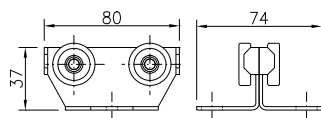
Material: Polyamid
Weight, kg: 0,04
Article No.: 11 995
Max. load, kg: 5

with S-hook

Article no.: 11 890

with SS snap hook

Article no.: 11 891

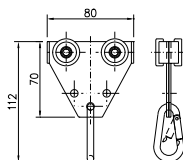


Standard trolley

Material: Galvanized steel body
Wheel with dustproof bearings
Weight, kg: 0,21
Max load, kg: 20
Article No.: 11 300

Trolley with U-bolt

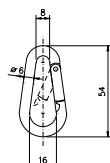
Article No.: 11 317



Trolley with snap hook

Material: Galvanized steel body
Wheel with dustproof bearings
Stainless steel snap hook

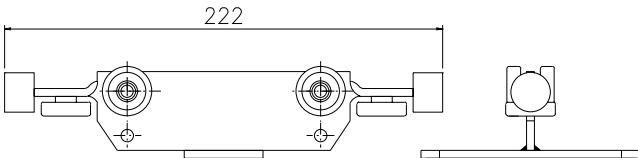
Weight, kg: 0,30
Max load, kg: 20
Article No.: 11 909



Snap hook

Material: Stainless steel

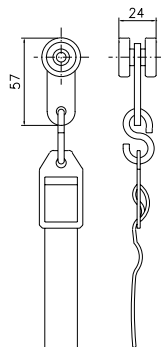
Weight, kg: 0,03
Article No.: 11 976



Trolley with guide wheels

Material: Galvanized steel body
Wheel with dustproof bearings
rubber buffers

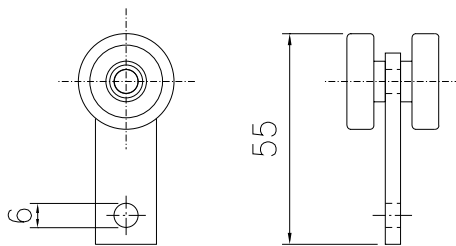
LxWxH: 222x106x40 mm
Weight, kg: 0,4
Max load, kg: 20
Article No.: 11 977



Trolley with thong

Material: Polyamide body
Wheel with dustproof bearings
hook of galvanized steel
Thong of polypropylen webbing

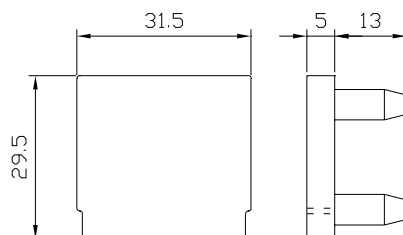
Weight, kg: 0,130
Max load, kg: 8
Article No.: 11 908



Steel trolley

Material: Galvanized steel body
Wheel with dustproof bearings

Weight, kg: 0,066
Max load, kg: 10
Article No.: 11 993



End plug for C30 rail

Material: Plast

Weight, kg: 0,008
Article No.: 11 845