

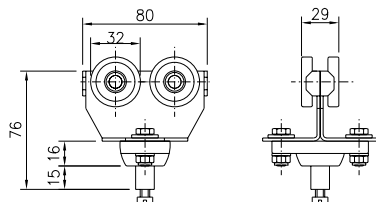
WORK STATION EQUIPMENT

Standard trolleys

C-rail C40 (40x40 mm.)



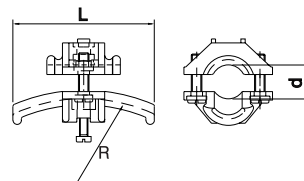
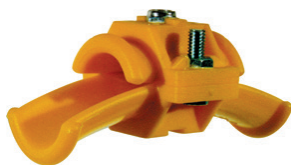
Sheet 11-126 2016



Trolley for cable or hose

Material: Body of galvanized steel
Wheel with dustproof bearings
balljoint in Polyamide

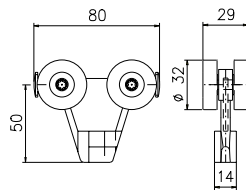
Cable load, kg: 32
Weight, kg: 0,52
Article No.: 11 502



Adjustable clamps for cable or hose

Material: Polyamide

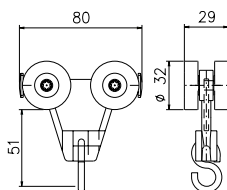
Diam., mm:	10 - 16	17 - 25	26 - 36
Radius, mm:	80	125	160
Length, mm:	70	100	140
Weight, kg:	0,04	0,06	0,12
Article No.:	11 050	11 051	11 052



Polyamide trolley

Material: Polyamide

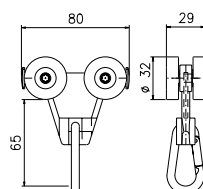
Weight, kg: 0,05
Max load, kg: 6
Article No.: 11 996



Polyamide trolley with S-hook

Material: Polyamide

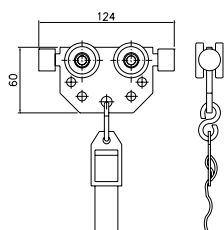
Weight, kg: 0,06
Max load, kg: 6
Article No.: 11 892



Polyamide trolley with snap hook

Material: Polyamide

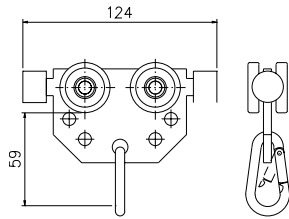
Weight, kg: 0,08
Max load, kg: 6
Article No.: 11 893



Trolley with thong

Material: Galvanized steel body
Wheel with dustproof bearings
hook of galvanized steel
Thong of polypropylen webbing

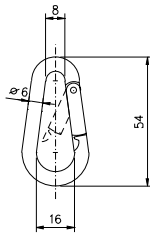
Weight, kg: 0,44
Max load, kg: 32
Article No.: 11 903



Trolley with snap hook

Material: Galvanized steel body
Rubber buffers
Stainless steel snap hook

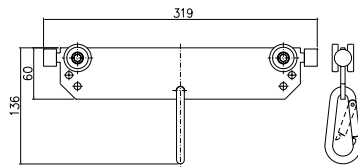
Weight, kg: 0,43
Max load, kg: 32
Article No.: 11 979



Snap hook

Material: Stainless steel

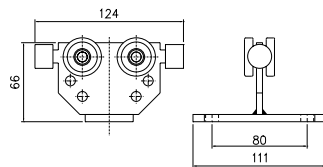
Weight, kg: 0,03
Article No.: 11 976



Trolley long with snap hook

Material: Galvanized steel body
Rubber buffers
Stainless steel snap hook

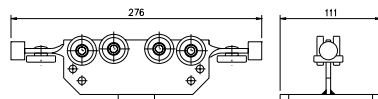
Length, mm: 319
Weight, kg: 1,12
Max load, kg: 50
Article No.: 11 904



Trolley

Material: Galvanized steel body
Rubber buffers

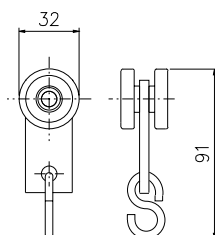
LxWxH: 124x106x70 mm
Weight, kg: 0,52
Max load, kg: 32
Article No.: 11 500



Trolley with guide wheels

Material: Galvanized steel body
Rubber buffers

LxWxH: 276x106x70 mm
Weight, kg: 1,20
Max load, kg: 32
Article No.: 11 978



Trolley

Material: Galvanized steel

Weight, kg: 0,16
Max load, kg: 16
Article No.: 11 505